

PETROC

TIVERTON
PROSPECTUS
2024/25



o f the a here



WELCOME TO PETROC



A Petroc Trust centre, we have created a campus and a community in the heart of the beautiful Midlands. Our centre provides high quality, flexible, and higher education in a friendly, accessible, community-focused environment.

We have focused on college on the kill and qualification needed within the area, giving learners a Petroc great opportunity to get good quality local jobs.

Whether you are a school-leaver, searching for the right qualification for yourself, or an adult learner looking to boost your skills or change career, Petroc will support every step of the way.

We believe in creating learning experiences that are tailored to your personal success, and our excellent facilities, exceptional support and

available connections with local employers will help to get you there. It's our chance.

A Petroc course isn't just a number, it'll be part of our community - a community focused on helping you to achieve your goal no matter where you are in your life and career. A place you can make of.

You're in control of your future; we can help to shape it.



Sean Mackney
Principal and CEO



DISCOVER OUR COURSES

CONSTRUCTION	8
FOUNDATION LEARNING	12

HEALTH & SOCIAL CARE	18
PREPARING FOR ADULTHOOD	22



FIND OUT MORE ONLINE
petroc.ac.uk

WHY STUDY AT PETROC?

We know that education is so much more than a classroom and a textbook. That's why our approach is to deliver Learning for Life: Enhancing and developing skills, opening up meaningful opportunities and enabling progression to a sustainable and exciting career.

Our Critical Learning for the Community offers an innovative approach to learning. It identifies and promotes skills that will offer a career path

that is highly successful in contributing to the local economy.

We have forged partnerships with local businesses to create opportunities for students and graduates to build their profile in the community. The essential connections help to offer career paths a more realistic picture of what is in demand in the local area - and beyond.

FACULTY & TEACHING STAFF

Our dedicated teaching staff are all subject specialists with a wealth of skills and knowledge. They are passionate and committed to helping you develop the abilities and qualities needed for a successful career. All are here to help, help, help - with their knowledge, know-how and industry

insight to inspire, challenge and support you.

At Petroc, we have worked hard to establish a supportive, caring and inclusive environment where you can flourish. Whether you need additional guidance and assistance with your studies or help with your personal wellbeing, our staff will work with you to find the right support to enhance your learning.

EMPLOYABILITY: SIGHTLINES TO CAREERS

When you decide to take a further step towards higher education, you're choosing to open up a world of opportunities. You'll gain the chance to undertake meaningful work placements that will give you valuable insight into employment and give you the relevant knowledge and life skills relating to your chosen

subject, enabling you to move into a sustainable career or take a step up on the career ladder.

Not just perfect learning, but perfect placement. Our placements will help you to put your classroom-based learning into practice, understand what it's really like to work in your chosen field and how to interact with colleagues and customers - whether that's in an office, workshop, laboratory or care home.

DIGITAL EXPERTISE

At Petroc, we embrace a range of learning platforms including Google Classroom, Moodle and OneDrive and each course is tailored to meet the educational and professional needs of our students.

Using Google Workspace for Education, we have developed a digital Critical Learning that will offer

you the chance to access the communication, collaboration, creativity and critical-thinking skills required for success in our rapidly evolving digital world.

Our online Critical Learning will allow you to learn in a range of ways, including Extended Reality (AR, VR and MR), which can complement face-to-face experience.



QUALIFICATIONS AND LEVELS - MAKING THE RIGHT DECISION

There are a number of different qualifications available at Petroc. We're here to help you choose the one that is most suitable for your needs and future aspirations.

Our dedicated Advice & Guidance Team can talk through the options available to you and can provide detailed explanation of qualifications and levels at petroc.ac.uk/which-course.

Entry Level:

Entry Level certificates give you access to Level 1 qualifications and employment. Qualifications include personal education courses to enable you to progress.

Entry requirements:

For all learners joining Entry Level Study Programme, there are no formal entry requirements; however, you will have a one-to-one interview to discuss your personal learning needs. You will also be interviewed on your English and Maths at an appropriate level of proficiency.

Level 1:

Level 1 certificates offer you the opportunity to acquire a broad range of knowledge and practical skills not taught in school to allow you to enter a trade or profession, such as carpentry and construction.

Completing a Level 1 qualification will give you access to Level 2 opportunities, apprenticeships and employment. This includes Vocational Qualifications and Functional Skills.

Entry requirements:

You must hold **four GCSEs at Grade 2 or equivalent (or above)**, preferably including Maths and English.

If you do not have a GCSE Grade 4 in Maths and/or English, you will continue studying these subjects alongside your chosen course.

At the end of the year, you are expected to have completed and achieved all the

Level 3:

Level 3 qualification will be on a pathway of higher apprenticeship of meaningful employment.

Qualification include T Level, A Level, Vocational qualification, advanced apprenticeship, and Access to Higher Education Diploma.

Entry requirements:

To be accepted onto a Level 3 programme, you must hold **at least five GCSEs at Grade 4 or above, including GCSE Maths and English Language.**

Certain subjects will be the higher grade profile - these are outlined in more detail on our website.

LEVELS 4-6 are university-level qualifications:

Perth has been delivering a range of degree-level college and qualification for over 30 years. We provide a wide range of degree-level programme in subject areas ranging from education, computing, science, engineering, and health & social care.

Level 4:

Foundation degree (Year 1), honours degree (Year 1), higher apprenticeship, degree apprenticeship, HNC, HND, and professional qualification.

Level 5:

Foundation degree (Year 2), honours degree (Year 2), higher apprenticeship, degree apprenticeship, and professional qualification.

Level 6:

Honours degree (Final Year), and degree apprenticeship.



SPECIALIST AREAS

At Peacock, we provide a range of specialist areas including: **Leisure, sports, education, opportunities, and training** to meet the needs of our learners, which we have established and individual needs of TLE and the surrounding area.

Over the years, we have built and maintained long relationships with a large number of businesses, organisations, and charities in our community. The excellent partnerships we have formed have helped our learning environment and the education experience we offer at Peacock.

CONSTRUCTION

FOUNDATION LEARNING

HEALTH & SOCIAL CARE

PREPARATION FOR ADULTHOOD

We have a wide range of additional courses available at our North Devon campus in Barnstaple. Students from TLE on High School, Uff26 c10.134 -7

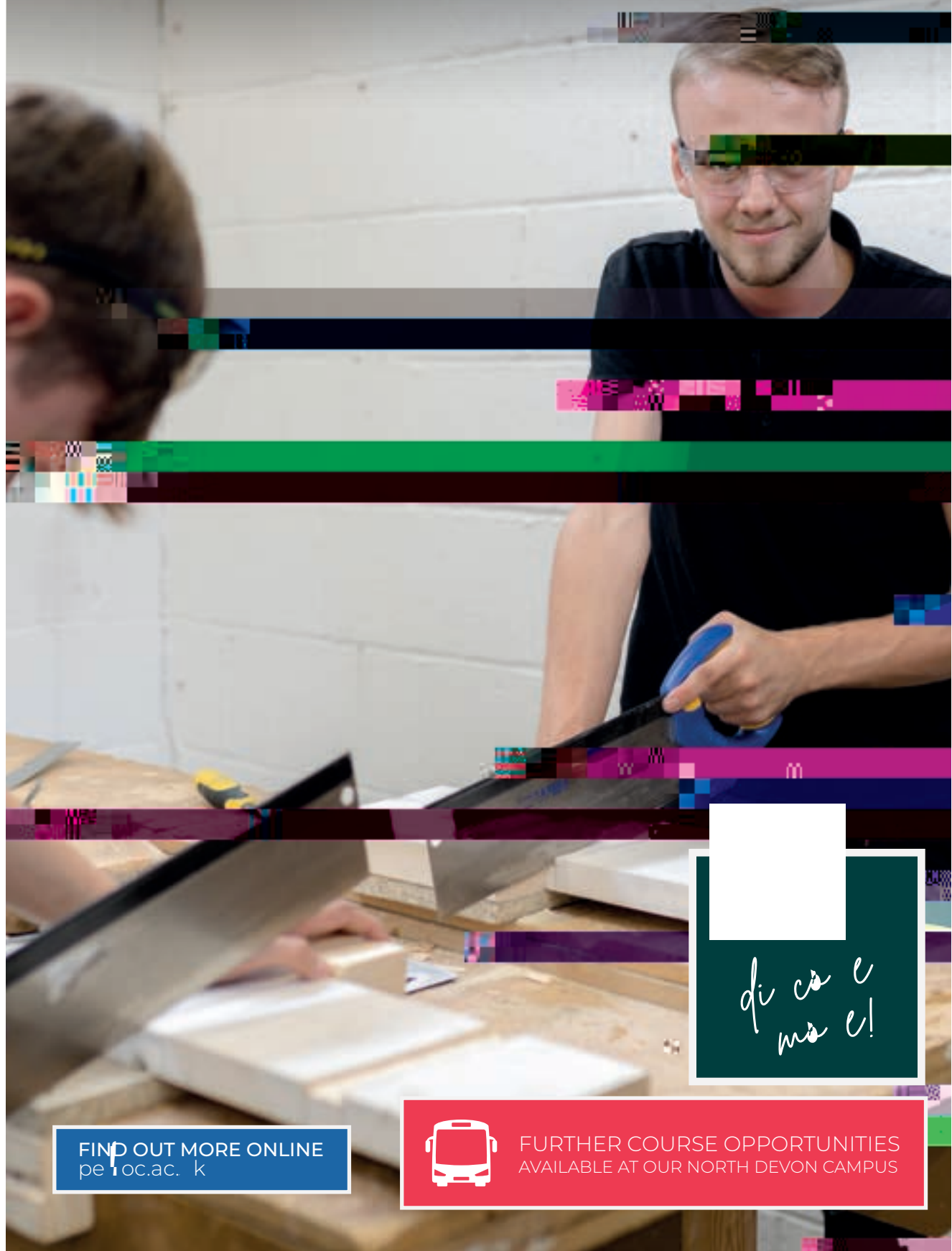


FURTHER COURSE OPPORTUNITIES
AVAILABLE AT OUR NORTH DEVON CAMPUS




MAXIMUM FOUR DAY TIMETABLE FOR FULL TIME LEARNERS

CONSTRUCTION



di cò e
mò e!

FIND OUT MORE ONLINE
pe10c.ac.uk

 FURTHER COURSE OPPORTUNITIES
AVAILABLE AT OUR NORTH DEVON CAMPUS

WHAT CAN I EXPECT?

The construction industry has experienced phenomenal growth in recent years and has evolved into an increasingly technical work environment, requiring a diverse range of skills and expertise.

From architecture, design, landscaping and construction planning to bricklaying, carpentry and engineering, construction holds a wealth of career opportunities where you can make your mark.

Throughout your studies, you will develop important hands-on, technical and practical skills from our highly-killed lecturers who have a wealth of industry experience. The industry provides guidance on how to progress your learning journey and help you achieve the highest standard in your chosen area. On campus, we have a range of work shop space for each of our trade colleges, all fully equipped with cutting-edge tools, machinery and environmental technology.

From dealing with our successful business of working on ground-breaking projects for a multinational contractor, our facilities in construction are here

Free Career ...



BRICKLAYING, CARPENTRY & JOINERY

Level 1 Diploma: 1 year

Tiverton FTT293

Full-time

This introductory programme combines classroom based and practical learning to provide a learner in a range of subject areas. You will learn core knowledge and specific skills that underpin each of the construction specialism. This will allow you to progress on to a higher level of study within your chosen specialism.

You will undertake an assessment of your core competences including core and specialist modules, a practical programme, and the opportunity to improve your GCSE maths and English. The course will allow you to develop your skills.

You will study the following modules:

- Introduction to the construction industry
- Introduction to brick and block masonry
- Introduction to carpentry and joinery
- Introduction to health and safety

ENTRY REQUIREMENTS

You must hold five GCSE at grade 2 or above, preferably including Maths and English Language.

PROGRESSION

Upon successful completion of this course, you can progress on to one of our Level 2 construction courses or an apprenticeship pathway.

CONSTRUCTION SKILLS

Level 2 Diploma: 1 year

Tiverton FTT311

Full-time

This Level 2 Foundation Year Programme has been developed to help you gain

You have 34 0.835 1.068 0 0 0 0 0 0 5.531

BRICKLAYER – APPRENTICESHIP

Level 2 Diploma: 1 year

Tiverton ATT124

Part-time

Bricklayer is a brick, block and other type of building component in mortar or concrete and repair all, and other concrete. The range of site and projects that a bricklayer will work on include large commercial developments, new build in housing, alteration, extension and redecoration.

During his apprenticeship, you will be expected to learn the following skills:

- Preparation of materials
- Safe working
- Masonry concrete
- Radial and battered brickwork
- Feature and reinforced brickwork
- Other brickwork
- Building technology

ENTRY REQUIREMENTS

If you have not achieved Level 2 English and Maths, you must achieve this prior to starting your end-point assessment.

PROGRESSION

Upon completion of this apprenticeship, you could further develop your knowledge through a higher level apprenticeship.

CARPENTRY APPRENTICESHIPS

We offer two apprenticeship
relating to construction:

**Level 2 Carpentry and
Joinery (Site Carpentry)** and
**Level 3 Advanced Carpentry
and Joinery (Site Carpentry).**

Apprenticeship blend
classroom learning with on-
the-job training, meaning you can
earn while you learn. You will
work full-time for a day in the
workplace as a paid employee,
with one day in the classroom
where you will reinforce and
develop your skills and
workplace learning.

During your apprenticeship, you
will be expected to undertake a
range of predefined knowledge,
skills and behaviours which
will relate to your chosen
construction programme.

Depending on the level, an
apprenticeship can be seen
as one and a half and can start
at a variety of points in the year.

ENTRY REQUIREMENTS

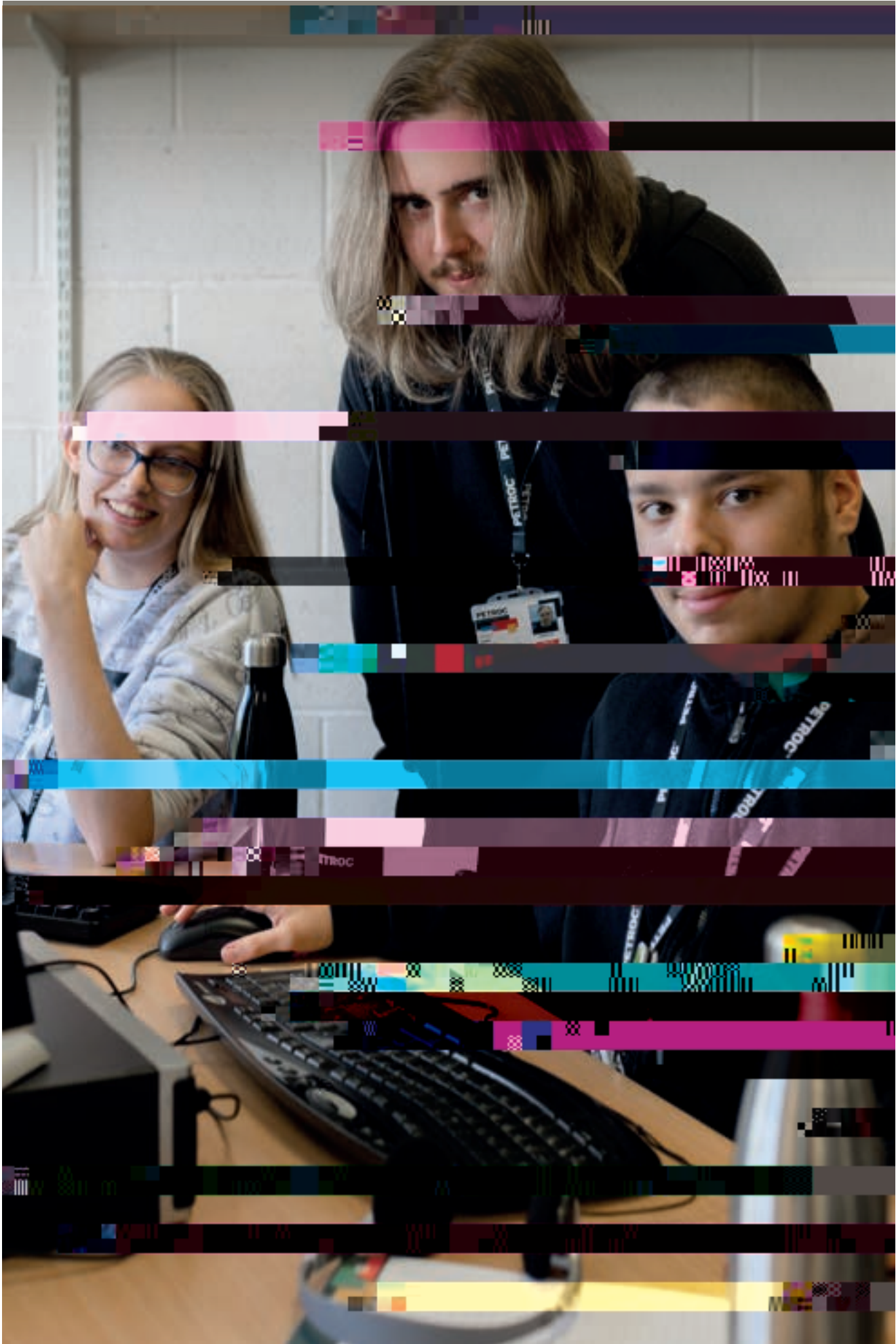
Each apprenticeship will
have its own specific entry
requirements; you can find out
more on our website.

PROGRESSION

An apprenticeship is a great
pathway to earning and
learning. Successful candidates
can be stepping stone to a
higher-level programme.

You can find out more about
apprenticeships at
www.ac.uk/apprenticeships

For the high
level of work in,
you can see the an
to make it h
see hip.
also





WHAT CAN I EXPECT?

Our foundation learning programme are aimed at individuals who may be unable to access a career path at the moment and follow.

Throughout our choice course, our staff will support and encourage you to develop both your personal and employability skills, building confidence and learning about which career path is right for you. You will be given the opportunity to access a range of educational and group community based activities, and at the end of our programme, you will be able to attend a personalised celebration of your achievements.



FUNCTIONAL SKILLS ENGLISH (ONLINE)

Level 2 Duration: 30 week

Tiverton

PTB622

Part-time

This online independent study course is designed for anyone who wants to improve their English skills for their workplace or for their studies.

You will cover a range of topics designed to help you improve your understanding of different texts and improve your spelling, punctuation and grammar to enable you to write concise and effective letters in a range of situations such as email, letters and reports.

You will also work on communication skills which are vital transferable skills for the workplace.

ENTRY REQUIREMENTS

Level 1 English or a Level 1 English

Grade 5-9 (Total 8157) or grade 9 (8157) or grade 9 (8157) or grade 9 (8157)

FUNCTIONAL SKILLS MATHS (ONLINE)

Level 2 Duration: 30 week

 Tiverton PTB619

Part-time

This online independent course will help you develop the skills that are needed in everyday life and working environments.

During the course, you will study the following modules:

- Fraction
- Decimal
- Percentage
- Data analysis
- Measurement
- Probability

ENTRY REQUIREMENTS

You will need a Level 1 Maths qualification or evidence of working at this level.

PROGRESSION

Functional Skills Maths Level 2 is a key qualification for employment, further and higher education.

PROJECT SEARCH (EXETER)

SUPPORTED INTERNSHIP

Entry Level D1a ion:1 ea

 Tiverton FTT001

Full-time

Supported Internships are for young people who are not in employment and need extra support to do so. It is aimed at those with learning difficulties and/or disabilities, aged 16 to 24, with a Statement of Special Educational Need, a MAPlan, a Learning Difficulty Assessment, or an EHCP.

The funded programme includes the following areas:

- On-the-job training with a local employer - supported by expert job coaches.

- Employability programme looking at the soft skills of employment.

- Vocational profiling to identify skills and specialise.

- Opportunities to work in relevant areas.

ENTRY REQUIREMENTS

There are no formal entry requirements, however, you will have a one-to-one interview to discuss your personal learning needs.

PROGRESSION

Successful completion of this course may provide you with the opportunity to progress to a supported internship course, an apprenticeship or a higher level of study in a vocational area.

FOUNDATION YEAR

Entry Level D1a ion:1 ea

 Tiverton FTT307

Full-time

This is a tailored programme designed to meet the educational and support needs of Pre-Entry and Entry Level learners.

It covers the following for young people with disabilities who are unable to attend: Employment, Independent Living, Community Inclusion and Good Health.

The course will include the following elements:

- Developing the personal and data-handling skills.

- Developing the relevant skills needed for employment.

- Work experience opportunities.

- Opportunities to engage with main team members.

- Enrichment activities.

- Educational visits and a residential trip.

ENTRY REQUIREMENTS

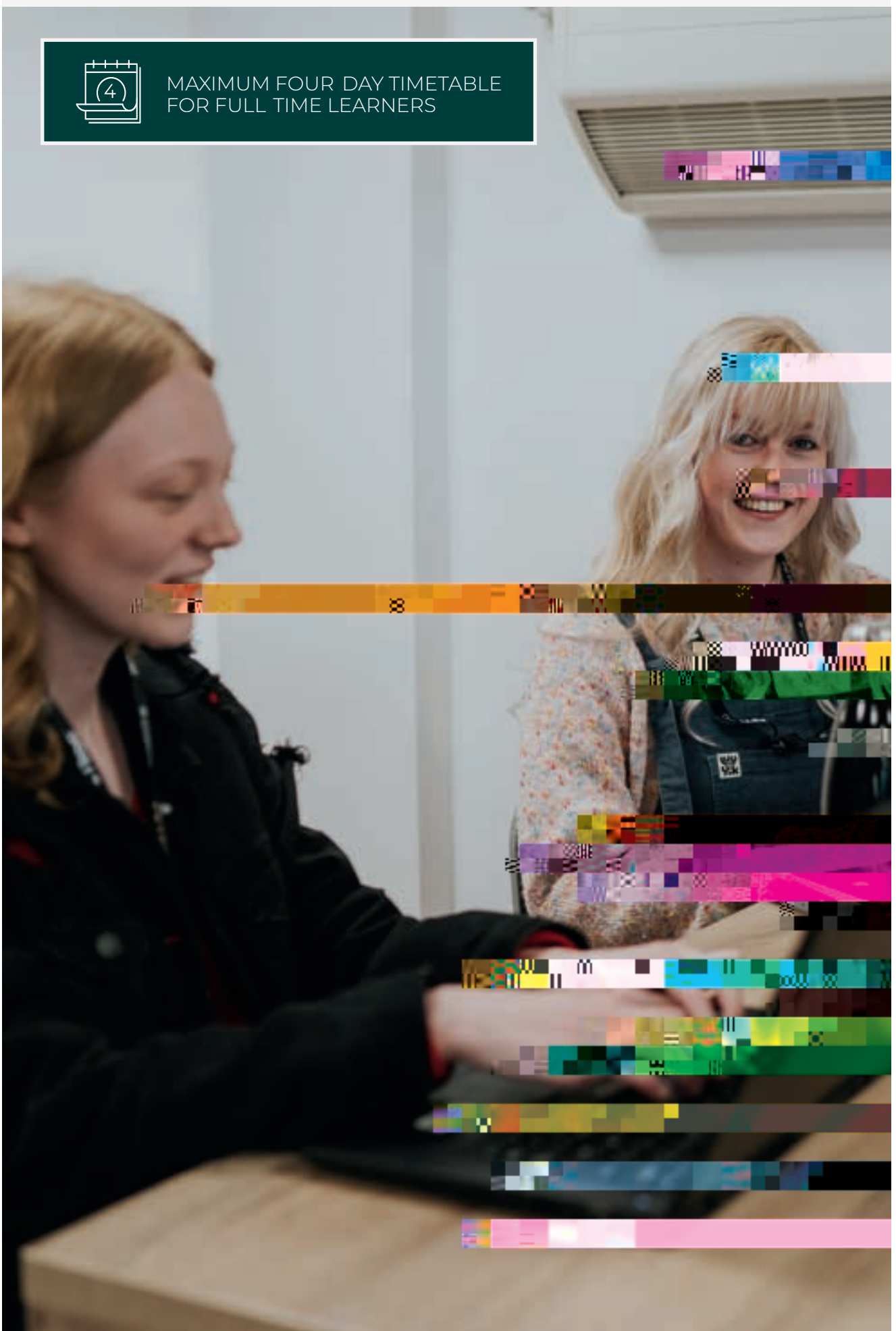
There are no formal entry requirements, however, you will have a one-to-one interview to discuss your personal learning needs.

PROGRESSION

Upon completion of this course, you will be able to progress to a further education, employment, independent living and participation in the community.



MAXIMUM FOUR DAY TIMETABLE
FOR FULL TIME LEARNERS



WHAT CAN I EXPECT?





PREPARING FOR ADULTHOOD



MAXIMUM FOUR DAY TIMETABLE
FOR FULL TIME LEARNERS

FIND OUT MORE ONLINE
pe1.oc.ac.uk

WHAT CAN I EXPECT?

Our specialist team provide tailored support to help you learn and grow from your school experience, by providing a safe, supportive and challenging curriculum. We encourage them to become more independent and confident.

We have facilities such as a canteen, garden and a

STUDENT LIFE



Petroc offers a wide range of enrichment opportunities for full-time learners. These will enable you to pursue personal interests, develop individual ambitions, and have been designed to support and complement your learning and development in a safe, enjoyable and supportive environment.

STUDENT UNION



Once you are the head and focus of everything you do and become a Petroc, you will automatically become a member of the Petroc Student Union (PSU).

The PSU is an independent committee of elected students with the sole aim of supporting fellow learners with the many facets of college life.

As a member of the PSU, you are also entitled to certain student discounts and benefits including, for a small cost, to be eligible for the TOTUM card.

TOTUM is the #1 student discount card and application to access exclusive student deals on food and fashion, tech, travel and much more!

Petroc Academies support the work and activities of specific topic, subject and college areas and give o



SUPPORTING YOU & YOUR LEARNING

Studying college can feel both exciting and daunting. With new buildings and campuses to navigate, lectures to meet and friends to make, it's perfectly normal to feel a bit nervous. But college is also a place where you should feel free to go, to learn on your own and meet like-minded people who have the same goals as you.

SAFEGUARDING AND WELLBEING

The protection, safety, health, wellbeing and welfare of all learners are of paramount importance at Petroc.

We follow the safeguarding and recognition of the responsibilities to safeguard and promote the welfare and wellbeing of children and young people.

We are committed to a 'whole college approach' to safeguarding. To this end, all employees have all staff are trained in Safeguarding and Child Protection and also in preventing radicalisation.

The college provides a comprehensive wellbeing and welfare service to students. This includes support for housing, financial need, and the physical and emotional safety, wellbeing and welfare of our learners, all of which can impact a student's ability to succeed.

Our commitment to have every student at Petroc will have the support and tools they need to achieve their best.

SUSTAINABILITY

At Petroc, we are passionate about sustainability. We believe that there will be no greater challenge to our global future than the current climate emergency.



As a college, we are committed to ensuring that we continue to improve the sustainability of our organisation through a range of approaches. We do this by promoting the idea of 'green' through embedding principles and practices that build a culture, highlighting the possibilities and meeting our own sustainability standards.

Our Sustainability Group meet on a regular basis to discuss college activities, have ideas and conduct initiatives which have included a tree-planting exercise, a pollution project, sustainability seminars and a radio on-campus development project to raise and improve energy efficiency. We are also actively committed to the UN Sustainable Development Goals.

TRAVEL

Petroc Tiverton has an excellent location and benefits from easy access by train and road links. We have ample parking, plenty of cycle hire and encourage active and sustainable travel wherever possible.

If you are a student from Tiverton High School, Uffington School and Clompton School and will be travelling more than three miles from home to a Petroc college - either in Tiverton or North Devon - you will be eligible for a free Singlecoach SW Gold term-time student bus pass.

For more travel information and information on bus passes, please visit petroc.ac.uk/travel or contact our Advice & Guidance Centre.

YOUNG ADULT CARERS

Petroc is committed to helping young adult carers who go through their college experience, and understanding what it is like to be a young adult carer can be challenging.

We can provide one-to-one personal and academic support, advice and guidance; a helpline to make a telephone call; referral to local services; and support from our wellbeing team.

Contact our friendly Advice & Guidance Team for more information:

01884 235245 | guidancecentretiverton@petroc.ac.uk

PROGRESSION

We are passionate about supporting our students to achieve their potential and beyond. We are committed to providing a high quality education for all our students, ensuring that every child has the opportunity to succeed. We are proud to be a part of the educational community and to work together to create a bright future for all.

ADDITIONAL COURSE OFFERINGS AT OUR NORTH DEVON CAMPUS

We offer a wide range of additional courses at our North Devon campus in Barnstaple. And the best part is they are all free* by choice!

For more information, just visit petroc.ac.uk or call our Advice & Guidance Centre on 01271 852422.

A LEVELS

A LEVELS (LANGUAGES & COMMUNICATION)

A LEVELS (MATHS & SCIENCE)

A LEVELS (SOCIAL SCIENCES)

HAIR & BEAUTY

SPORT

OPEN EVENTS

Open events are held to help you get an insight into life at Peñac, a kitchen and find out more about what we can offer you. Come along to one of our open events to find out more information:

Speak to our expert lecturers and find out more about our college, our awarding bodies and progression routes.

Meet our students who will be able to give you a first-hand account of what it's really like to study at Peñac.

To take full advantage of our excellent facilities and see how we'll be supporting your learning and socialising.

Get help and

